

**Regenerating employment for the migrated workers affected by
COVID 19 from spring shed rejuvenation of upper catchment area of
Henwal River.**

Wilde Ganzen Foundation and Himalaya Resources

Interim Report, October 2022



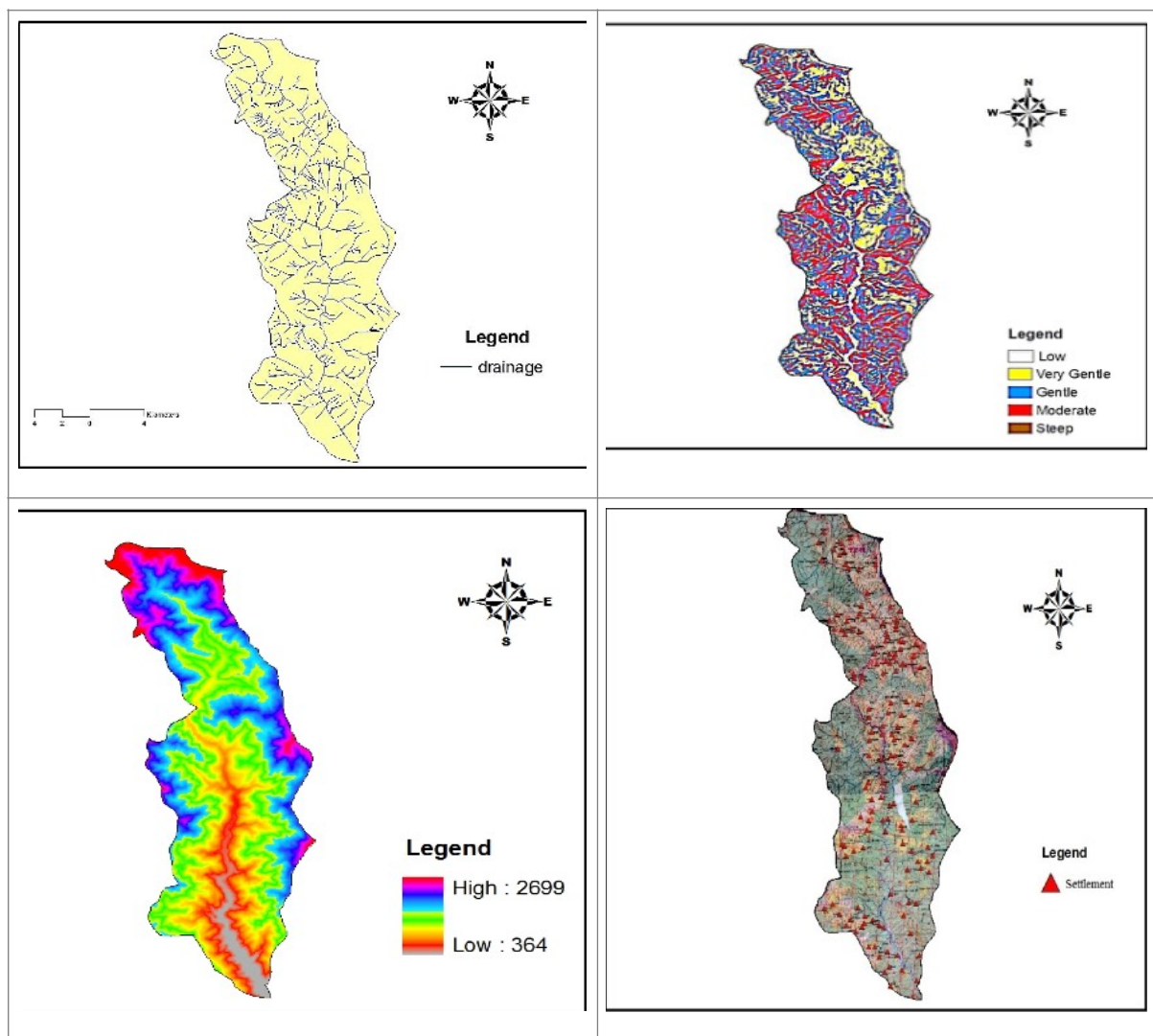
By

HIMCON

Village & Post Sabli-249199

About Project Area

Henwal valley lies in the central part of Tehri Garhwal district of Central Himalayas. The valley stretches from the *Surkanda* range of mountains in the North to *Shivpuri* in the East. Henwal River is the main rain-fed River in the valley that takes its origin in the dense natural forests of the *Surkanda* range and drains into the Ganga in *Shivpuri*, a few kilometers above *Rishikesh*. *Shivpuri* lies in the Pauri district of Garhwal. The altitude of the Henwal valley ranges from less than 800 to above 3000 meter. The valley area comprises narrow belt of flatland or moderately undulated land along the Henwal River which is used for agricultural purposes. The upper areas are mostly covered with natural oak forests. Large parts of the natural forests have been transformed into apple orchards. The famous *Chamba-Mussoorie* Fruit Belt lies in the upper reaches of the Henwal



Awareness meetings with women and youth groups

HIMCON started this project from August 2022 onwards. This project is being implemented in *Bidkot, Patudi, Lawadhar, Chopriali, Sabli, Than and Bidon* villages of Henwal river catchment area covering around 500 families. We consult the villages and make a plan of action depending on the necessity of the village communities. Those people mostly in need of money get priority in the selection of who will execute the work. In this project, we jointly agreed that returned migrated workers should benefit the most from the job opportunities created via the project activities.

Our field team is organizing monthly meetings on the topic of soil and water conservation with women and youth groups. The involved migrated workers participated in these meetings. While the project is being implemented on the ground we are making people understand the problems and how this project is beneficial for natural resource conservation and livelihood generation.

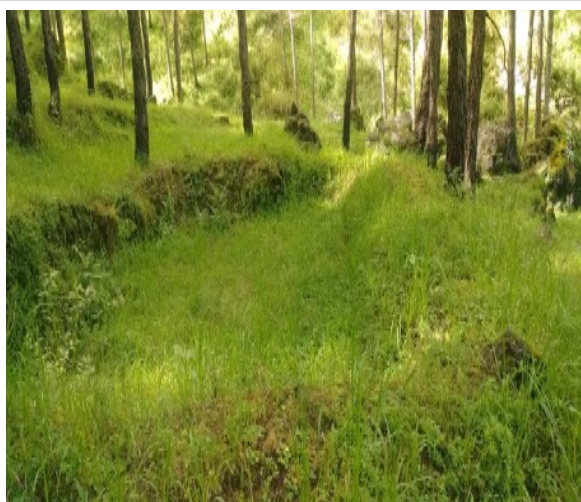


Preparation for construction of Chaal/ Percolation ponds

Our field team is surveying the sites of percolation ponds in the upper catchment area of the Henwal valley with local people. Some old percolation ponds are being and will be desilted and repaired and some will be dug out as new ponds. The list of proposed ponds is as follows :

Sl.No.	Name of the Village	Percolation Ponds
1.	Chopriali	12
2.	Bidkot	10
3.	Patudi	13
4.	Lawadhar	10
5.	Sabli	03
6.	Than	06
7.	Bidon	06

In this monsoon season, we had dug out 07 percolation ponds in *Patudi* village and 03 in *Chopriali*. 80 youth and women participated in this process.





Old water harvesting defunct tanks repair work :

Our field team is collecting data of old and defunct tanks which needed repair and made useful for the water storage for drinking purpose. In upcoming months, we will repair and maintain the following water tanks.

Sl.No.	Name of the Village	Defunct water tank
1.	Chopriali	04
2.	Bidkot	04
3.	Patudi	01
4.	Sabli	01



Plantation work for spring catchment area

With the support of the women and youth groups this year we will collect Oak acorns for direct seed sowing in seven project village. In the HIMCON nursery we are developing 5000 local bushes, 5000 oaks saplings and we are also booking approximately 2000, one to two year old plant saplings from forest department of Uttarakhand for coming monsoon plantation. The list of winter and summer plantation is given below.

Sl.No.	Name of the Village	Plantation in Hectares
1.	Chopriali	02
2.	Bidkot	01
3.	Patudi	03
4.	Lawadhar	01
5.	Sabli	01
6.	Than	01
7.	Bidon	01

In previous monsoon season, we had planted 6430 broad leaf saplings in *Than* and *Patudi* village of the Henwal valley. In *Patudi* we planted 500 oak, 1200 *sinsyaru* and 80 kilogram oak acron direct sown in community forest. In *Than* village we had planted *Timla* 100, *Oak* 500, *Bhimal* 100, *Guriyal* 180, *Sinsyaru* 1150, *Bedu* 95, *Wild rose* 1190, *Mulberry* 235 and *Jijharu* 1180. In these activities around 120 women and youth participated for two to three days' work.



